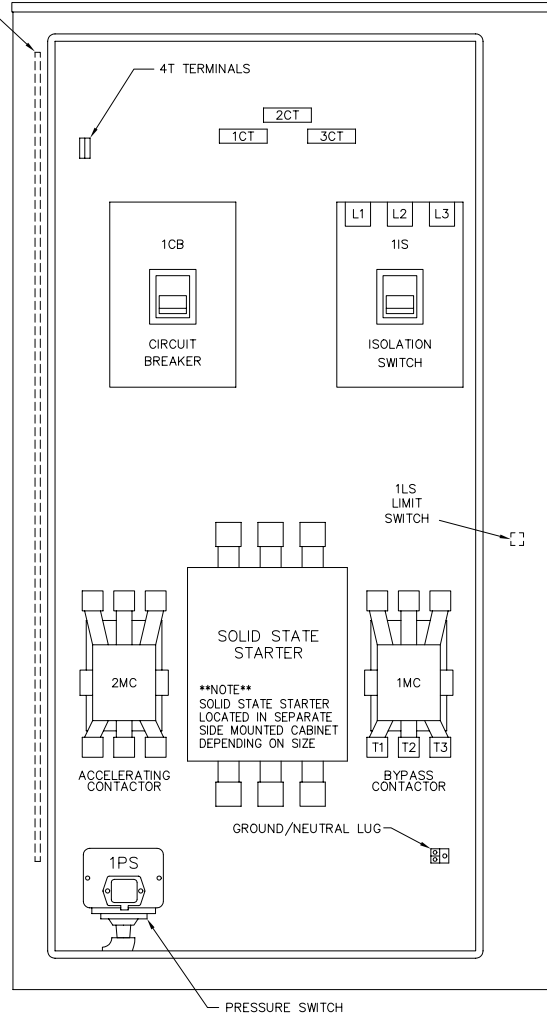
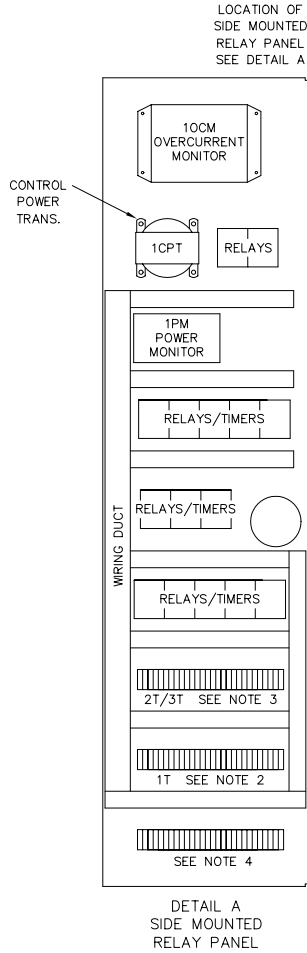


1T*
FIELD
TERMINALS

- | | | |
|----|----|--|
| 1 | 1 | } N.O. CONTACT. OPENS ON
LOSS OF CONTROLLER POWER |
| 2 | 2 | |
| 3 | 3 | } N.C. CONTACT. CLOSSES ON
LOSS OF CONTROLLER POWER |
| 4 | 4 | |
| 5 | 5 | } N.O. CONTACT. CLOSSES
WHEN PUMP RUNNING |
| 6 | 6 | |
| 7 | 7 | } N.C. CONTACT. OPENS
WHEN PUMP RUNNING |
| 8 | 8 | |
| 9 | 9 | } REMOTE START. PUMP WILL
START WHEN SWITCH CLOSSES |
| 10 | 10 | |
| 11 | | |
| 12 | | |
| 13 | | |
| 14 | | |
| 15 | | |
| 16 | | |
| 17 | | |
| 18 | 18 | } N.O. CONTACT. CLOSSES
ON PHASE REVERSAL |
| 19 | 19 | |
| 20 | 20 | } N.C. CONTACT. OPENS
ON PHASE REVERSAL |
| 21 | 21 | |
| 22 | 22 | } N.O. CONTACT. OPENS
ON MOTOR OVERLOAD |
| 23 | 23 | |
| 23 | 23 | } N.C. CONTACT. CLOSSES
ON MOTOR OVERLOAD |
| | | |



MAXIMUM MOTOR HORSEPOWER	VOLTS AC					PRIMARY WIRE SIZE	
	200V	208V	220V - 240V	380V - 415V	440V - 480V	LINE TERMINAL WIRE SIZE PER PHASE	SERVICE ENTRANCE GROUND LUG WIRE SIZE
25 HP	25 HP	30 HP	50 HP	60 HP	#14-1/0 AWG	(2) #10-1/0 AWG	
40 HP	40 HP	50 HP	75 HP	100 HP	#4-4/0 AWG	(2) #10-1/0 AWG	
60 HP	75 HP	75 HP	125 HP	150 HP	#4-350 MCM	(2) #10-1/0 AWG	
100 HP	125 HP	125 HP	200 HP	250 HP	(2) #3/0-250 MCM	(2) #10-1/0 AWG	
150 HP	150 HP	200 HP	300 HP	400 HP	(2) #3/0-350 MCM	(2) #6-250 MCM	

NOTES:

- POWER MONITOR SIGNALS ANY OF THE FOLLOWING FAILURES:
LOW VOLTAGE
LOSS OF VOLTAGE
PHASE REVERSAL
- 1T FIELD TERMINALS ARE LOCATED AT BOTTOM OF SIDE MOUNTED RELAY PANEL. SEE DETAIL A
- 2T, 3T & MANUAL STOP JUMPER ARE LOCATED IN THIS AREA.
- EXTRA (OPTIONAL) TERMINALS ARE LOCATED IN THIS AREA.

DRAWN	SR	5-22-98	METRON, INC. DENVER, CO.
CHECK	KH	5-22-98	
APPD	J.D.	5-22-98	
INTERNAL LAYOUT & EXTERNAL HOOKUP MODEL M700, SOFT START/STOP ELECTRIC FIRE PUMP CONTROLLER			CH33046C
SCALE N.T.S			SHEET 1 OF 1